

SHITSUKAN X Escape Room Project

“An incredible adventure of our senses – escape room for learning human mind”

1. Event information

Event in conjunction with 2017 Asia Pacific Conference on Vision

- Date: 2017/07/13-18 (6 days)
- Time: 10 a.m. – 9 p.m.
- Location: National Cheng-Kung University, Tainan, Taiwan
- Language: English (for conference attendants) & Mandarin (for general public)
- **No. of sessions: 148 (42 English, 106 Mandarin)**
- **No. of participants: 743**
- **8 media coverage**

Organizers

- Psychology Department of National Cheng-Kung University, Taiwan
- Innovative “Shitsukan” Science and Technology research group, Japan
- The Japanese Psychonomic Society committee for developing teaching materials for high school students

Co-organizer

- Shioiri Vision Laboratory, Tohoku University, Japan
- Asia Pacific Conference on Vision (APCV) 2017

Organizing committee

- Chiahuei Tseng (Tohoku University), Hsin-Ni Ho & Junji Watanabe (NTT)

2. Scientific demos in the game

Shitsukan science

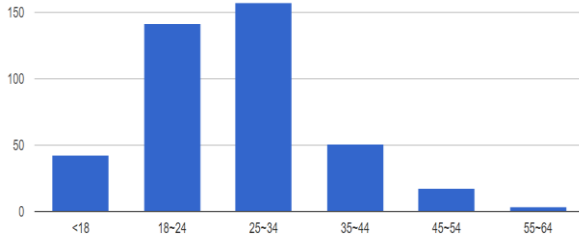
- Tactile sensitivity
Test people’s tactile sensitivity in discriminating [thickness, roughness, hardness, coldness]
- Material recognition
Test people’s ability in recognizing materials though:
 - Exploratory movement of the hand (Yokosaka et. al, 2017)
 - Sound of materials (Owens et. al, 2015)
 - Visual-Tactile texture matching

Vision science (Face recognition)

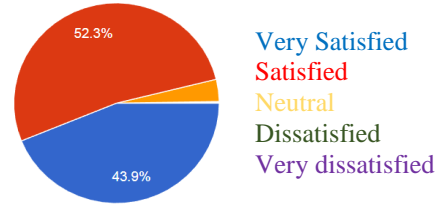
- Test people’s ability in recognizing their own and other’s faces
 - Self-face identification (Demo from Kisosin)
 - The Thatcher illusion (Demo from Tohoku university)

3. Event feedback (~700 responses)

● **Age: 3-64 years old**



● **Overall experience**

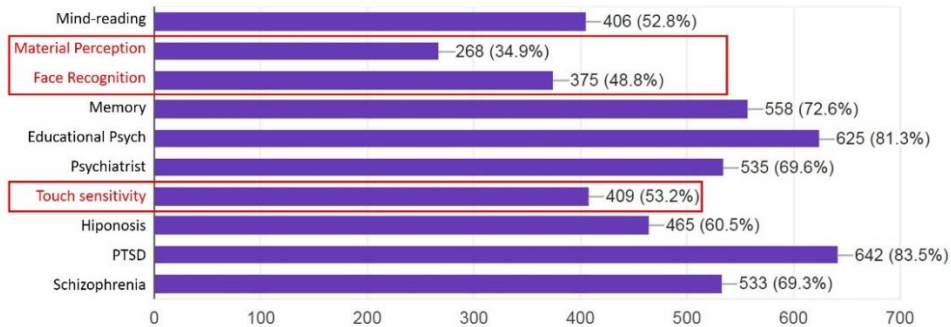


● **What attracts you to this event (multiple options)?**

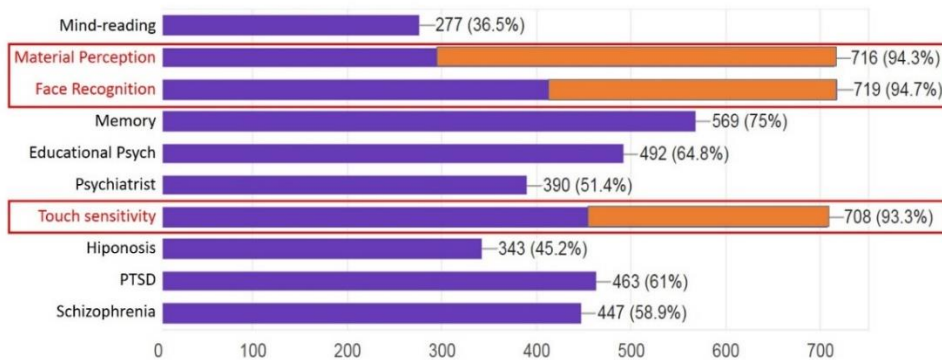
- Room Escape Game (578, 75.3%)
- Spend time with family and friends (473, 61.6%)
- Learn about science (187, 24.3%)

● **Clarify Misconceptions?**

What of the followings do you think belong to what psychologists study (Before the game?)



What of the followings do you think belong to what psychologists study (After the game)



AN INCREDIBLE ADVENTURE OF OUR SENSES

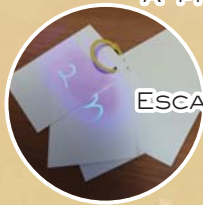
DATE:
JULY 13TH -
JULY 18TH

EVENT VENUE:
NATIONAL
CHENG-KUNG
UNIVERSITY
(FREE ADMISSION)

ESCAPE ROOM
FOR
LEARNING
HUMAN MIND

A PHYSICAL ADVENTURE GAME TO TACKLE
VISUAL AND SHITSUKAN PUZZLES

ESCAPE FROM THE ROOM WHILE LEARNING
ABOUT YOUR SENSES



Access

2F, South Block, College of Social Science,
Li-Hsing Campus, National Cheng-Kung University
(Enter from Xiaodong Rd. Between NCKU hospital and the magic school of green technologies)

Organizer:

- Psychology Department of National Cheng-Kung University, Taiwan
- Innovative SHITSUKAN Science and Technology Research group, Japan
- The Japanese Psychonomic Society committee for developing teaching materials for high school students

Co-organizer:

- Shioiri Vision Laboratory, Tohoku University, Japan
- Asia Pacific Conference on Vision (APCV) 2017

Contact information

Ms Hsu
Mobile: 0979-840-805
email : gotainan2017@gmail.com
<https://www.facebook.com/RoomEscapeAPCV2017/>

Special thanks to Sakamoto laboratory, The university of Electro-Communications, for providing shaped mood stickers